



# GUIDE

FOR INCOMING STUDENTS



**UFSC**



**POSMEC**





Research Laboratories for Emerging  
Technologies in Cooling and Thermophysics



# GUIDE

FOR INCOMING STUDENTS



Fig. 1 - Overhead view of the Florianópolis bridges

**Florianópolis** (Portuguese pronunciation: [flori.a'no polis] is the capital city and second largest city of Santa Catarina state in the southern region of Brazil. It is composed of one main island, the Island of Santa Catarina (Ilha de Santa Catarina), a continental part and the surrounding small islands. It has a population of 421,203, the second most populous city in the state (after Joinville), and the 47<sup>th</sup> most populous in Brazil. The metropolitan area has an estimated population of 1,096,476, the 21<sup>st</sup> largest in the country. The city is known for its very high quality of life, being the Brazilian capital city with the highest Human Development Index score (0.0847). The economy of Florianópolis is heavily based on information technology, tourism and services industries.

The city has 42 beaches and is a center for surfing activities. *The New York Times* reported that "Florianópolis is the Party Destination of the Year" in 2009. *Newsweek* placed Florianópolis in the "Ten most dynamic cities of the world" list in 2006. As a result of this exposure, Florianópolis is growing as a second home destination for many Paulistas, Argentines, North Americans and Europeans.

The fishing boats, the lacemakers, the folklore, the cuisine and the colonial architecture contribute to the growing tourism. Villages immersed in tradition and history, such as Santo Antônio de Lisboa and Ribeirão da Ilha still resist the advances of modernity. The Hercílio Luz International Airport serves the city. Florianópolis is home to the Federal University of Santa Catarina (Universidade Federal de Santa Catarina - UFSC). In addition, the Santa Catarina Federal Institute of Education, Science and Technology (Instituto Federal de Santa Catarina), and two campuses of the State University of Santa Catarina (Universidade do Estado de Santa Catarina - UDESC) are also located in the city, amongst other institutions of higher and professional education.

## About POLO

POLO - Research Laboratories for Emerging Technologies in Cooling and Thermophysics - was founded in 1982 by faculty members of the area of Thermal Sciences at UFSC's Department of Mechanical Engineering. In this short space of time POLO has established a tradition of excellence in teaching, research and extension. Within the framework of POLO there is a strong commitment to the formation of human resources, the advancement of knowledge and the development of methodologies for the solution of complex engineering problems. The approach taken is that technological development can only be achieved through a harmonious combination between basic and applied research.

With the support of the Department of Mechanical Engineering, POLO has developed more than 30 years of uninterrupted partnership with EMBRACO Compressors, a leading company in the field of household and light commercial refrigeration compressors. This partnership, which has also been continuously supported by Brazilian government agencies for promoting research and advanced studies (FINEP, CNPq and CAPES), has allowed the Federal University of Santa Catarina (UFSC) to establish itself as a reference for research in the field of refrigeration. As a result of the high-quality research conducted at POLO, other partnerships with large companies such as Whirlpool, Bosch, Electrolux, Metalfrío, Embraco, WEG and Petrobrás have been consolidated over this period.



Fig. 2 - POLO building



## **VISION**

To be a center of excellence in the field of refrigeration, a developer of breakthrough research and of highly educated engineers in tune with the needs of industry.

## **MISSION**

To form highly qualified engineers and to carry out innovative research, at the scientific and applied levels, aligned with the real needs of the refrigeration industry.

## **VALUES**

Train skilled professionals to undertake innovative work from the technological point of view.

Extend the existing experimental and computational infrastructure to better meet the research demands of the productive sector.

Increase the capacity to conduct of research focused on the study of new technologies in the field of refrigeration activities.

Create a nurturing environment to attract national and international researchers as a way to generate advanced scientific cooperation programs.

## SUMMARY

HOW TO GET TO FLORIANOPOLIS.....	5
TRANSPORTATION.....	6
FIRST PROCEDURES AFTER ARRIVAL AT UFSC.....	7
REGISTRATION AT THE FEDERAL POLICE.....	10
OBTAINING AN INDIVIDUAL TAXPAYER IDENTIFICATION NUMBER (CPF).....	11
ACCOMMODATION AROUND UFSC (HOSTELS, HOTELS AND GUEST HOUSES).....	12
RENT AN APARTMENT WITH OTHER UFSC STUDENTS.....	12
BUS LINES TO AND FROM UFSC.....	13
RESTAURANTS AROUND UFSC.....	15
SUPERMARKETS / GROCERY STORES NEAR UFSC.....	15
TOURISM.....	16
CITY MALLS.....	21
UFSC MAPS.....	23
ADDRESS.....	24

## HOW TO GET TO FLORIANOPOLIS

### BY PLANE

- Hercílio Luz International Airport (IATA: FLN) - 12 km from the city center. Connected to the city by local bus and taxi services.
- The Brazilian airline "TAM"<sup>1</sup> provides international and domestic services to Florianopolis. Flights are available from JFK International (NY), Miami, Madrid, London, Frankfurt, Milan and from the main cities of South America. Most of the flights require a connection in Sao Paulo.
- Airlines Gol<sup>2</sup>, Azul<sup>3</sup> and Avianca<sup>4</sup> operate domestic flights to the city. Gol also offers destinations in South America, like Buenos Aires, Montevideo and Santiago.
- In the summer months (December to March) several daily charter flights arrive from Argentina & Chile. Aerolineas Argentinas<sup>5</sup> usually adds seasonal daily non-stop flights to and from Buenos Aires.

### BY BUS



Fig. 3 - Rita Maria Bus Terminal

- Terminal Rodoviário Rita Maria (The Central Bus Station) is located in the city center. It links Florianopolis to the main Brazilian cities and to most of the cities in Santa Catarina state. The main bus companies operating in Florianopolis are Catarinense, Reunidas, Santo Anjo and Eucatur.

<sup>1</sup> [www.tam.com.br](http://www.tam.com.br)

<sup>2</sup> [www.voegol.com.br](http://www.voegol.com.br)

<sup>3</sup> [www.voegol.com.br](http://www.voegol.com.br)

<sup>4</sup> [www.avianca.com.br](http://www.avianca.com.br)

<sup>5</sup> [www.aerolineas.com](http://www.aerolineas.com)



## BY CAR

---

- The main highway, Route BR-101, crosses Brazil from north to south and serves the city. The entrance to Florianópolis is at kilometer 206 and from there signs direct to the express route BR-282 which leads to Florianópolis.

## TRANSPORTATION

### BUS

---

From the city center, dozens of buses<sup>6</sup> serve all parts of the island. However, the bus system has drawbacks since it is often needed to change buses at regional terminals, and some trips can take up to a couple of hours if there are long layovers. The cost is R\$3.10 each way, and transfers are free at the stations. It takes about 35-60 minutes on average to get from downtown Florianópolis to UFSC. Additionally, there is The Executive Transportation, also popularly known as "Amarelinhos" (yellow bus). These are yellow minibuses with air conditioning that stop anywhere along the route the passengers can hail one from any point on the road or ask the driver to stop once aboard. The cost of this lines is R\$ 7.00 each way. The bus companies are separated according to the local geography. The app "Consórcio Fenix"<sup>7</sup> allows users to view the schedules, maps and routes of 177 common lines and 25 executive lines that pass through Florianópolis.

### TÁXI

---

- TICEN (centre terminal) to UFSC:  $\simeq$  R\$ 25,00, 15 minutes without traffic.
- Terminal Rodoviário Rita Maria:  $\simeq$  R\$ 25,00, 15 minutes without traffic.
- Airport to UFSC:  $\simeq$  R\$ 37,00, 20 minutes without traffic.

### RENT A CAR

---

There are many companies that offer car rental services. The costs per day are around  $\simeq$  R\$150 depending on the car. Some car rental agencies in Florianópolis are:

- **Lemans –Rent-a-Car<sup>8</sup>**
- **Móbilis locação de veículos<sup>9</sup>**
- **Dica autolocadora<sup>10</sup>**

<sup>6</sup> <http://www.consorciufenix.com.br/>

<sup>8</sup> <http://www.lemansfloripa.com.br/>

<sup>10</sup> <http://www.dicaautolocadora.com.br/>

<sup>7</sup> <http://www.consorciufenix.com.br/app-qrcode>

<sup>9</sup> <http://mobiliscar.com.br/florianopolis-aluguel-de-carros-sc/>

## FIRST PROCEDURES AFTER THE ARRIVAL AT UFSC



Fig. 4 - UFSC entrance

After arriving in Florianópolis, there is a series of essential steps which will ensure the success of the exchange program at UFSC. Our team will provide support, if necessary.

- 1. Meeting with your tutor/professor**
- 2. Registration at SINTER (UFSC's International Office)**
- 3. Registration at the Mechanical Engineering Department**
- 4. UFSC Card**

## 1. MEETING WITH YOUR TUTOR/PROFESSOR

---

The tutor is the professor responsible for overseeing the student, assisting in choosing and changing the student's schedule for attending courses at the institution, guiding them in their academic procedures and addressing any doubts regarding the academic activities.

Before arrival, the student must contact the professor and inform them of the date of arrival and number of the flight. In some cases the professor may be able to meet the student at the airport and help them to settle into the city.

## 2. REGISTRATION AT SINTER

The **Office of International Affairs (SINTER)**<sup>11</sup> is an agency at the Universidade Federal de Santa Catarina (UFSC) which aims to promote interaction with international organizations and institutions of higher education, to support and implement technical, scientific and cultural cooperation agreements and to enable the exchange of students, teachers and technical/administrative staff.

Exchange students pay no fees at UFSC, except for extension activities, extracurricular courses, or any other non-scheduled activities.

### 2.1 UNDERGRADUATE STUDENTS

After their arrival at UFSC, the student must registry at SINTER by presenting with the following documents:

- Acceptance letter given by the professor
- Passport
- Student visa
- Health insurance for the exchange period

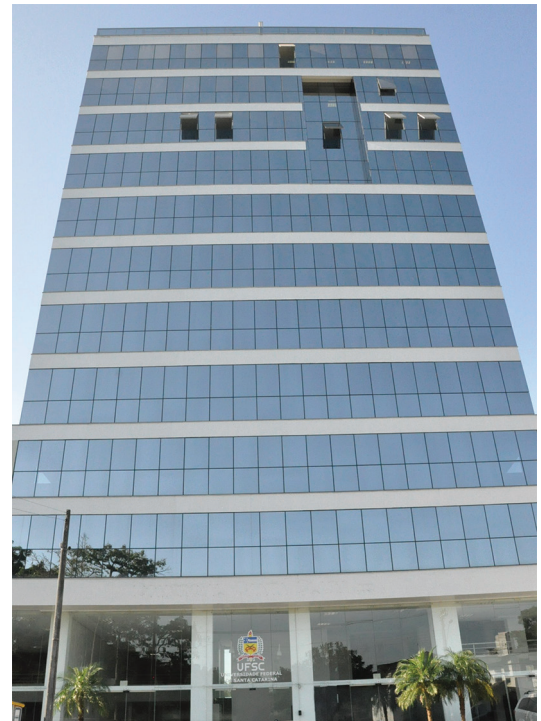


Fig. 5 - Reitoria building

After presenting these documents at SINTER the student will be provided with a registration statement, which is given by a **CAGR**<sup>12</sup> (Academic Control of Undergraduate Courses) **number**.

### 2.2 MASTER'S, DOCTORAL AND POST-DOCTORAL STUDENTS

Graduate students register directly at POSMEC – Graduate Program in Mechanical Engineering.

<sup>11</sup> <http://sinter.ufsc.br/>

<sup>12</sup> <http://cagr.sistemas.ufsc.br/>

## 3. REGISTRATION AT EMC – MECHANICAL ENGINEERING DEPARTMENT



Fig. 6 - Logo of the mechanical engineering department

### Undergraduate students

In order to register at the department the student must bring the acceptance letter provided by the professor and the registration statement provided by SINTER to the EMC office. After presenting these documents the student needs to enroll on the course to be attended. Our team will provide the full name and code of the course to be attended by the student.

## 4. REGISTRATION AT POSMEC - GRADUATE PROGRAM IN MECHANICAL ENGINEERING

Master's, doctoral and post-doctoral students register directly at POSMEC – Graduate Program in Mechanical Engineering. The student must present the following documents:

- Passport
- Student's visa
- Acceptance letter provided by the professor

After presenting these documents a registration statement will be provided, which is given by a **CAPG<sup>13</sup>** (Academic Control of Graduate Courses) **number**. With the CAPG number it is possible to enroll on the course to be attended, also at POSMEC. Our team will provide the full name and code of the course to be attended by the student.

## 5. UFSC ID CARD

The UFSC ID Card is a student identification card. The UFSC ID gives the student permission to use the university restaurant (RU) and the library. Students can obtain UFSC ID Cards at the RU Administration - they will need to present their registration statement (*Atestado de Matrícula*) provided by SINTER and their passport (undergraduate students). Master's, doctoral and post-doctoral students must present their enrollment certificate provided by POSMEC and their passport. In Brazil, students are entitled to pay half price for many cultural events, such as concerts and movie theaters. The UFSC ID Card together with the registration statement can be used in this case to confirm student status.



Fig. 7 - UFSC ID Card

## REGISTRATION AT THE FEDERAL POLICE

All foreign students must register with the Federal Police within 30 days of arriving in Brazil (this is not necessary for those who have Brazilian citizenship).

The registration can be carried out after payment of two fees: Registration of foreigners (Registro de estrangeiros) and Foreigner's Card (Carteira de estrangeiro)

To pay these fees the student should access the website <[www.dpf.gov.br](http://www.dpf.gov.br)> and follow these steps:



Fig. 8 - Building of the Federal Police

- In the home page, on the left side of the screen, select, GRU-> Pessoas e entidades estrangeiras.
- Fill in the required personal information at “Dados do Recolhimento”.  
Link: <https://servicos.dpf.gov.br/gru/gru?nac=1&rec=2>

Attention: The ‘Name’ field should be filled in first, with first name(s), followed by surname (family name(s)). The *Unidade Arrecadadora* field should be filled in with *Superintendência Regional no Estado de Santa Catarina*. The codes for “Código da Receita STN” are:

- 140082** for the “**REGISTRO DE ESTRANGEIROS**” - Registration of foreigners (R\$ 64.58)
- 140120** for the “**CARTEIRA DE ESTRANGEIRO DE PRIMEIRA VIA**” - Foreigner's Card, 1<sup>st</sup> (R\$124.23).

The student will also have to fill in their address in Florianópolis. If you haven't established one yet, ask our staff how to proceed. After doing this, it is necessary to print both documents, pay the fees at any bank and retain proof of payment.

After paying the fees, you should schedule a visit to the Federal Police, located in Florianópolis, and appear on the day and time scheduled, with the following documents:

## Documents required:

- Federal Police form completed and printed. The form is available at: <https://servicos.dpf.gov.br/sincreWeb>
- Proof of schedule (printed). You can also schedule a visit at: <https://servicos.dpf.gov.br/sincreWeb/pesquisaAgendamento.jsp>
- Copy of all used pages of your passport (including those containing only one stamps)
- Copy of the document that the student receiveds when entering the country
- 2 color photos (3cm x 4cm) taken with a white background
- Proof of payment of the fees mentioned above (Registration of Foreigners - Registro de Estrangeiros - and Foreigner's Card - Carteira de estrangeiro)
- Visa application form - provided by the Brazilian Embassy in the country of origin (original and copy)

## OBTAINING AN INDIVIDUAL TAXPAYER IDENTIFICATION NUMBER (CPF)



Fig. 9 - Front and back of CPF card

The CPF - Certificado de Pessoa Física (Individual Taxpayer Identification Number) relates to a database managed by the Federal Revenue Service of Brazil (RFB), which holds a registry of information on taxpayers required to have a CPF number, and citizens who have voluntarily signed up.

If interested, the student can obtain this document by registering at a Post Office agency (*Correios*) and they must present their passport and proof of residency in Brazil. The student will then receive a code.

In order to obtain a CPF number, the student must go to the Federal Revenue Service of Brazil (Delegacia da Receita Federal do Brasil) in Florianópolis, and present the following documents: passport, proof of residence in Brazil and the code obtained at the Post Office.

### ACCOMMODATION AROUND UFSC (HOSTELS, HOTELS AND INN'S)

- **Hotel Quinta da Bica D'água<sup>14</sup>**, 10 minutes walk. \$\$\$  
Rua Capitão Romualdo de Barros, 641, Carvoeira. Phone: (48) 3331-0700.
- **Hotel Slavieiro<sup>15</sup>**, 10 minutes walk. \$\$\$\$  
Av.Des.Vitor Lima, 380 – Trindade. Phone: (48) 3203-1000.
- **Casa albergue<sup>16</sup>**, 20 minutes walk. \$  
Rua José Batista Rosa, 84 - Trindade. Phone: (48) 3233-3840.
- **Residencial Palmares<sup>17</sup>**, 20 minutes walk. \$  
Rua Dep. Antônio Edu Vieira, 680, Pantanal  
Phone: (48) 3234 8389.

### RENT AN APARTMENT WITH OTHER UFSC STUDENTS

Many students look for a colleague to share an apartment and in this regard they generally consult UFSC's official Ads website<sup>18</sup>. Social media can also be helpful. There are unofficial UFSC groups on Facebook featuring other students looking for roommates.

Many students prefer to rent a 'kitnet', a small one bedroom apartment. Most of them offer free wifi, include water and electricity expenses and are furnished. The monthly cost is  $\simeq$  R\$700.00 (all included). Trindade, Pantanal, Carvoeira and Córrego Grande are the closest neighborhoods around UFSC.

<sup>14</sup> <http://www.hotelquintadabicaagua.com.br>

<sup>15</sup> [www.hotelslavieiro.com.br](http://www.hotelslavieiro.com.br)

<sup>16</sup> <http://casalbergue.blogspot.com.br/>

<sup>17</sup> [www.residencialpalmares.com.br](http://www.residencialpalmares.com.br)

<sup>18</sup> <https://classificados.inf.ufsc.br/>

## BUS LINES AROUND UFSC



Fig. 10 - Florianópolis Bus

The bus transportation system in Florianopolis has 6 integration terminals “terminais de integração” operating within the city, wich are:

- TICEN - Centro (SETUF)
- TITRI - Trindade
- TISAN - Santo Antônio de Lisboa
- TICAN - Canasvieiras
- TILAG - Lagoa da Conceição
- TIRIO - Rio Tavares



To travel to UFSC from the Center Terminal (TICEN) the student should go to “Platform A” and take one of the lines below. All of them stop at UFSC, but “Volta ao Morro -Pantanal” stops closest to POLO’s building.

- Volta ao Morro Carvoeira Norte
- Volta ao Morro Carvoeira Sul
- UFSC Semi Direto
- Volta ao Morro Pantanal Norte
- Volta ao Morro Pantanal Sul

### BUS LINES NAMES

---

The names and the routes of the bus lines can found on the “Consórcio Fenix” website<sup>19</sup>.

### PAYMENT

---

- **Money:** the bus fare can be paid directly to the conductor (cobrador) but not to the driver. The conductor sits a couple of seats into the bus and will let you through the turnstile once you pay the fare for your journey. You should pay the driver only on the executive lines (yellow bus), where there is conductor.

- **Passe-rápido Turista**<sup>20</sup> (tourist bus card): Electronic cards can be purchased for R\$3.00 at the "Setuf" office at the Center Terminal (TICEN). This card can be recharged at the integration terminals (terminais de integração).

**TIP:** The fare is cheaper when using the tourist card (passe rápido turista) and you are not charged again if you later change buses at a terminal or bus stop, whereas by paying cash the passenger pays for only one ride. There are some restrictions for ‘integrating’ bus rides using the card, for instance, time limits, and passengers can only change buses once on a trip, traveling in the same direction: outward or return journey. However, in general, the passenger can go from one part of the island to another while paying only once.

---

<sup>19</sup> <http://www.consorciofenix.com.br/horarios>

<sup>20</sup> <http://www.setuf.com.br/passe-rapido/cartoes/turista>

## RESTAURANTS AROUND UFSC

- **Restaurante Universitário-RU<sup>21</sup> (University Restaurant) (RU) \$**  
R\$ 1.50 (serves lunch and dinner)
- **Verdilha<sup>22</sup>**  
Rua Deputado Antônio Edu Vieira, 1760 - Pantanal (near POLO/CTC).
- **Restaurante Athenas II**  
Rua Deputado Antonio Edu Vieira, 60 - Pantanal (near POLO/CTC).
- **Restaurante Mirantes<sup>23</sup>**  
Rua João Pio Duarte Silva, 58 - Córrego Grande (near the entrance to Córrego Grande).
- **Praça de alimentação do Shopping Trindade<sup>24</sup>**  
Rua Lauro Linhares, 2123 - Trindade (near the square “Praça Santos Dumond”)

## SUPERMARKETS AROUND UFSC

- **Mercado Manhattan 44 (Grocery Store)**  
Av. Desembargador Vitor Lima, 410 - Carvoeira (near Hotel Slavieiro)
- **Hipermercado BIG (Supermarket)**  
Av. Madre Benvenuta, 687 – Santa Mônica (ground floor of Shopping Iguatemi)
- **Supermercado Angeloni<sup>25</sup> (Supermarket)**  
Rua: Nirberto Haase, 75 - Santa Mônica (across the road from Shopping Iguatemi)
- **Mercado Pitz (Grocery Store)**  
Rua Sérgio Lopes Falcão, 147 – Trindade

<sup>21</sup> <http://ru.ufsc.br/>

<sup>22</sup> <http://www.verdilha.com.br/>

<sup>23</sup> [http://www.mirantes.com.br/lj\\_09.html](http://www.mirantes.com.br/lj_09.html)

<sup>24</sup> <http://www.trindadeshopping.com.br/>

<sup>25</sup> <http://www.angeloni.com.br/>

## TOURISM

- **Lagoa da Conceição:** The Lagoon known as Lagoa da Conceição is close to some of the island's best beaches, namely Praia Mole beach and Joaquina beach, both of which have hosted major international professional surfing events.



Fig. 11 - Lagoa de Conceição

- **Ribeirão da Ilha:** 36 kilometers from the city center, this old district of Florianópolis is a testament to Azorean immigration. Its historic center, in Frequesia, has a square where the church Igreja Nossa Senhora da Lapa do Ribeirão is located, and the Ethnological Museum houses documents and relics from the region's history.



Fig. 12 - Ribeirão da Ilha



Fig. 13 - Santo Antônio de Lisboa

- **Santo Antônio de Lisboa:** A quaint neighborhood, located on the calm west coast of the island. Several restaurants are located directly on the waterfront.



Fig. 14 - Metropolitan Church

- **Catedral Metropolitana:** The main cathedral is one of the most beautiful buildings in the city, located downtown on the square Praça XV de Novembro. It was founded on March 19, 1908.

- **Municipal Market:** Formerly used as the city market place, this downtown shopping area in Largo da Alfândega still holds some interesting sights. It has a varied commerce, especially clothing, food, utensils and various crafts. Moreover, it is an important meeting point and leisure area of the city, both for locals and for tourists. It was built in 1851.



Fig. 15 - Public Market

- **Hercílio Luz Bridge:** The postcard symbol of the city, inaugurated in 1926 linking the island to the mainland.



Fig. 16 - Hercílio Luz Bridge



Fig. 17 - Álvaro de Carvalho Theater

- **Teatro Álvaro de Carvalho (Álvaro de Carvalho Theater):** Located in the city center, the Municipal Theater is an example of 1870's local architecture.

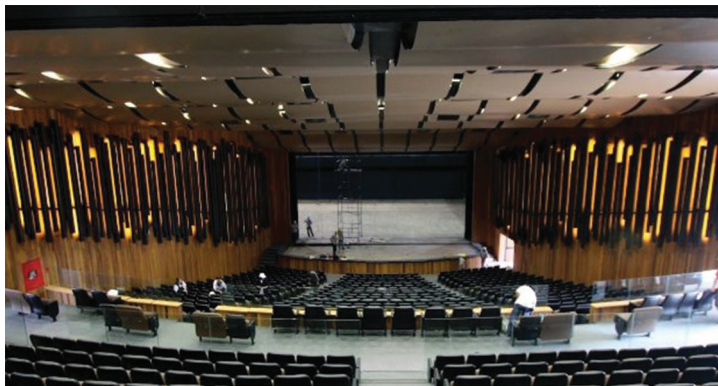


Fig. 18 - Ademar Rosa Theater

- **Teatro Ademar Rosa (Teatro do CIC, CIC Theater):** Opened in 1982, this is considered the best theater in Santa Catarina, with a capacity for 906 people in the audience. Administered by the Santa Catarina Culture Foundation, the cultural organ of the state government, it occupies a total area of 1746.46 km<sup>2</sup>.

- **Velha Figueira:** This  $\geq 100$  year-old fig tree can be found downtown in the main square Praça XV de Novembro and it is honored in the official municipal hymn of Florianopolis.



Fig. 19 - Velha Figueira – Praça XV

- **Forts:** Constructed as early as 1739, the forts served to protect the city from possible Spanish attacks.

*Fort Fortaleza de Nossa Senhora da Conceição (1742)*

*Fort Fortaleza de Santo Antônio (1740)*

*Fort Fortaleza Santana (1761)*

*Fort Fortaleza São José da Ponta Grossa (1740)*

## CITY MALLS



Fig. 20 - Shopping Beiramar

- **Shopping Beiramar**<sup>26</sup>: the most traditional shopping mall on the island, where the public can have fun, shop and enjoy many services.



Fig. 21 - Floripa Shopping

- **Floripa Shopping**<sup>27</sup>: designed and built to be a tribute to Santa Catarina's capital, Floripa Shopping is a center for shopping, dining, leisure and entertainment, with new stores and exclusive brands in Santa Catarina.



- **Shopping Iguatemi** <sup>28</sup>: offers 200 shops and 7 movie screens. In fact, it hosts one of the largest cinema screens in Brazil, with a modern stadium seating style.



Fig. 22 - Shopping Iguatemi

- **Shopping Trindade** <sup>29</sup>: Closest to UFSC and offers a variety of services, shops and a food court.



Fig. 23 - Shopping Trindade

<sup>26</sup> <http://www.iguatemi.com.br/florianopolis>

<sup>27</sup> <http://www.trindadeshopping.com.br>



## ADDRESS

- 1. Casa albergue:** Rua José Batista Rosa, 84, Trindade, Florianópolis-SC. Phone: +55 48 3233-3840.  
Website: <http://casalbergue.blogspot.com.br/>
- 2. Catedral Metropolitana de Florianópolis:** Rua Padre Miguelinho, 55, Centro, Florianópolis – SC.
- 3. Delegacia da Receita Federal do Brasil - Federal Revenue Service of Brazil:** Rua Claudino Bento da Silva, nº 11, Centro, Florianópolis. Phone: +55 48 3229-2000.
- 4. Dica autolocadora:** Rodovia Admar Gonzaga, 2589, Itacorubi, Florianópolis – SC.  
Phone: +55 48 3304-5040.  
Website: <http://www.dicaautolocadora.com.br/>
- 5. Floripa Shopping:** Rodovia SC-401, 3116, Saco Grande, Florianópolis-SC. Phone: +55 48 3331-1000.  
Website: <http://www.floripashopping.com.br/> .  
*Fort Fortaleza Santana (1761)*  
*Fort Fortaleza São José da Ponta Grossa (1740)*
- 6. Hercílio Luz International Airport (IATA: FLN):** Avenida Diomício Freitas, 3393, Carianos, Florianópolis-SC. Phone: +55 48 3331-4000.
- 7. Hipermercado BIG:** Av. Madre Benvenuta, 687, Santa Mônica, Florianópolis –SC.  
Phone: +55 48 3901-2405.
- 8. Hotel Quinta da Bica D'água:** Rua Capitão Romualdo de Barros, 641, Carvoeira, Florianópolis-SC.  
Phone: +55 48 3331-0700. Website: <http://www.hotelquintadabicaagua.com.br>.
- 9. Hotel Slavieiro:** Avenida Desembargador Vitor Lima, 380, Trindade, Florianópolis-SC.  
Phone: +55 48 3203-1000. Website: [www.hotelslavieiro.com.br](http://www.hotelslavieiro.com.br) .
- 10. Lemans –Rent-a-Car:** Avenida Deputado Diomício Freitas, 3062, Carianos, Florianópolis-SC.  
Phone: +55 48 3222-9999. Website: <http://www.lemansfloripa.com.br/>
- 11. Mercado Manhattan 44:** Av. Desembargador Vitor Lima, 410, Carvoeira, Florianópolis –SC.  
Phone: +55 48 3234-4400
- 12. Mercado Pitz:** Rua Sérgio Lopes Falcão, 147, Trindade, Florianópolis-SC. Phone: +55 48 3233-2971.

**13. Mercado Público de Florianópolis:** Avenida Paulo Fontes, 500, Florianópolis – SC.

Phone: +55 48 3225-8464.

**14. Móbilis locação de veículos:** Avenida Deputado Diomício Freitas, 2664F, Carianos, Florianópolis-SC.

Phone: +55 48 3238-1457. Website: <http://mobiliscar.com.br/florianopolis-aluguel-de-carros-sc/>

**15. Polícia Federal - Federal Police:** Rua Paschoal Apóstolo Pítsica, 4744, Agronômica, Florianópolis-SC.

Phone: +55 48 3281-6500.

**16. Residencial Palmares:** Rua Deputado Antônio Edu Vieira, 680, Pantanal, Florianópolis-SC.

Phone: +55 48 3234 8389. Website: [www.residencialpalmares.com.br](http://www.residencialpalmares.com.br)

**17. Restaurante Athenas II:** Rua Deputado Antonio Edu Vieira, 60, Pantanal, Florianópolis-SC.

**18. Restaurante Mirantes:** Rua João Pio Duarte Silva, 58, Córrego Grande, Florianópolis-SC.

Phone: +55 48 3234-4956. Website: [http://www.mirantes.com.br/lj\\_09.html](http://www.mirantes.com.br/lj_09.html).

**19. Restaurante Verdilha:** Rua Deputado Antônio Edu Vieira, 1760, Pantanal, Florianópolis-SC.

Phone: +55 48 3233-2128. Website: <http://www.verdilha.com.br/>

**20. Shopping Beiramar:** Rua Bocaiúva, 2468, Centro, Florianópolis-SC. Phone: +55 48 3223-6425.

Website: <http://www.shoppingbeiramar.com.br/>.

**21. Shopping Iguatemi:** Av. Madre Benvenuta, 687, Santa Mônica. Phone: +55 48 3231 4900.

Website: <http://www.iguatemi.com.br/florianopolis>.

**22. Shopping Trindade:** Rua Lauro Linhares, 2123, Trindade. Phone: +55 48 3233-6333.

Website: <http://www.trindadeshopping.com.br/>.

**23. Supermercado Angeloni:** Rua Nirberto Haase, 75 - Santa Mônica, Florianópolis-SC.

Phone: +55 48 3215-6200

**24. Teatro Ademir Rosa (Teatro do CIC, CIC Theater):** Avenida Governador Irineu Bornhausen, 5600, Agronômica, Florianópolis-SC. Phone. +55 48 3664-2555.

**25. Teatro Álvaro de Carvalho:** Rua Marechal Guilherme, 26, Centro, Florianópolis – SC.

Phone: +55 48 3028-8070/3028-8071.

**26. Terminal Rodoviário Rita Maria:** Av. Paulo Fontes, 1104, Centro, Florianópolis-SC.

Phone: +55 48 3222-2260.

**27. TICAN - Terminal de Integração de Canasvieiras:** Rua Francisco Faustino Martins, Canasvieiras, Florianópolis – SC. Phone: +55 48 3269-5123.

**28. TICEN – Terminal de Integração do Centro:** Avenida Paulo Fontes, 701, Centro, Florianópolis-SC.

Phone: +55 48 3324-1517.

**29. TILAG - Terminal de Integração da Lagoa:** Avenida Afonso Delambert Neto, S/N, Lagoa da Conceição, Florianópolis- SC. Phone: +55 48 3232-5944.

**30. TIRIO - Terminal de Integração do Rio Tavares:** Rodovia SC-405, 630, Rio Tavares, Florianópolis-SC.

Phone: +55 48 3237-2245.

**31. TISAN - Terminal de Integração de Santo Antônio de Lisboa:** Rodovia SC-401, S/N, Santo Antônio de Lisboa, Florianópolis – SC. Phone: +55 48 3234-9575.

**32. TITRI- Terminal de Integração da Trindade:** Avenida Prof. Henrique da Silva Fontes, S/N, Trindade, Florianópolis – SC. Phone: +55 48 3223-6683.

## REFERENCES

**Figure 1:** Vista aérea das pontes de Florianópolis - *Overhead view of the Florianópolis bridges*

**Available in:** <http://g1.globo.com/sc/santa-catarina/fotos/2015/03/fotos-florianopolis-comemora-289-anos.html#>

**Access:** June 22, 2015

**Figure 2:** Prédio do POLO – *POLO building*

Arquivo institucional - Institutional Archive

**Figure 3:** Terminal Rodoviário Rita Maria - *Rita Maria Bus Terminal*

**Available in:** <http://www.mobfloripa.com.br/imagens/noticia001803.jpg>

**Access:** June 22, 2015

**Figure 4:** Entrada da UFSC - *UFSC entrance*

**Available in:** <http://www.ufpi.br/subsiteFiles/petfilosofia/arquivos/imagens/ufsc.jpg>

**Access:** June 22, 2015

**Figure 5:** Prédio da Reitoria - *Reitoria building*

**Available in:** [http://noticias.ufsc.br/files/2013/10/predioll\\_reitoria\\_inteiro.jpg](http://noticias.ufsc.br/files/2013/10/predioll_reitoria_inteiro.jpg)

**Access:** June 22, 2015

**Figure 6:** Logo of the mechanical engineering department

**Available in:** [http://www.petroleo.ufsc.br/imagens/logos/logo%20EMC/Manual%20de%20Uso/Arquivos\\_logos/3\\_EMC\\_logo.jpg](http://www.petroleo.ufsc.br/imagens/logos/logo%20EMC/Manual%20de%20Uso/Arquivos_logos/3_EMC_logo.jpg)

**Access:** June 22, 2015

**Figure 7:** UFSC ID Card

**Available in:** <http://image.slidesharecdn.com/apgaulasmagnas11-2-110817145319-phpapp01/95/associo-de-psgraduandos-17-728.jpg?cb=1313629660>

**Access:** June 22, 2015

**Figure 8:** Prédio da Polícia Federal em Florianópolis - *Building of the Federal Police*

**Available in:** <http://www.clmais.com.br/public/noticias/049615.jpg>

**Access:** June 22, 2015

**Figure 9:** Front and back of CPF card

**Available in:** <http://www.europartner.com.br/br/wpcontent/uploads/sites/2/2014/05/cpf2.jpg>

**Access:** June 22, 2015

**Figure 10:** Ônibus de Florianópolis - *Florianópolis Bus*

**Available in:** [http://s2.glbimg.com/IBvMc21I\\_AleBKoEoFgmXKlxu10=/620x465/s.glbimg.com/jo/g1/f/original/2014/04/30/novoonibus-florianopolis.jpg](http://s2.glbimg.com/IBvMc21I_AleBKoEoFgmXKlxu10=/620x465/s.glbimg.com/jo/g1/f/original/2014/04/30/novoonibus-florianopolis.jpg)

**Access:** June 22, 2015

**Figure 11:** Lagoa de Conceição

**Available in:** [http://ricmais.com.br/sc/wp-content/uploads/2014/01/MG\\_9931lagoa-da-concei%C3%A7%C3%A3o-mirante-da-lagoa-mirantesFoto-Flavio-Tin2014-620x400.jpg](http://ricmais.com.br/sc/wp-content/uploads/2014/01/MG_9931lagoa-da-concei%C3%A7%C3%A3o-mirante-da-lagoa-mirantesFoto-Flavio-Tin2014-620x400.jpg)

**Access:** June 22, 2015

**Figure 12:** Ribeirão da Ilha

**Available in:** [https://upload.wikimedia.org/wikipedia/commons/thumb/5/5d/Ribeirao\\_da\\_ilha.jpg/300px-Ribeirao\\_da\\_ilha.jpg](https://upload.wikimedia.org/wikipedia/commons/thumb/5/5d/Ribeirao_da_ilha.jpg/300px-Ribeirao_da_ilha.jpg)

**Access:** June 22, 2015

**Figure 13:** Santo Antônio de Lisboa

**Available in:** <http://www.imobiliariaflorianopolis.com/imagens/praias/santo-antonio-lisboa/santo-antonio-lisboa.jpg>

**Access:** June 22, 2015

**Figure 14:** Catedral Metropolitana – Metropolitan Church

**Available in:** <http://img.viajeabrazil.com/Que-ver-en-Florian%C3%B3polis-2.jpg>

**Access:** June 22, 2015

**Figure 15:** Mercado público - Public Market

**Available in:** <http://ndonline.com.br/uploads/global/materias/2014/04/29-04-2014-20-28-49-mercado-publico-marco-santiago-07-january2013-mg-7862-x2.jpg>

**Access:** June 22, 2015

**Figure 16:** Ponte Hercílio Luz - Hercílio Luz Bridge

**Available in:** <http://imgms.viajeaqui.abril.com.br/19/foto-galeria-materia-620-31.jpeg?1327933685>

**Access:** June 22, 2015

**Figure 17:** Teatro Álvaro de Carvalho - Álvaro de Carvalho Theater

**Available in:** [http://www.deolhonailha.com.br/fmanager/doni/news/imagem37014\\_1.jpg](http://www.deolhonailha.com.br/fmanager/doni/news/imagem37014_1.jpg)

**Access:** June 22, 2015

**Figure 18:** Teatro Ademar Rosa - Ademar Rosa Theater

**Available in:** <http://cdn.guiasrbs.com.br/p4eUzyLuptBYGage6GfpZ6f8HRc=/620x330/smart/www.guiadasemana.com.br/system/pictures/2013/4/72546/cropped/cic-2.jpg>

**Access:** June 22, 2015

**Figure 19:** Velha Figueira – Praça XV

**Available in:** <http://www.hoteis-em-florianopolis.com/imagens/Florianopolis/sightseeing/VelhaFigueira-1m.jpg>

**Access:** June 22, 2015

**Figure 20:** Shopping Beiramar

**Available in:** [http://hoteiscostanorte.com.br/wp-content/uploads/2014/11/shopping\\_beiramar\\_2.jpg](http://hoteiscostanorte.com.br/wp-content/uploads/2014/11/shopping_beiramar_2.jpg)

**Access:** June 22, 2015

**Figure 21:** Floripa Shopping

**Available in:** <http://www.meucat.com/imagens/hotel/shop-floripa-flo.jpg>

**Access:** June 22, 2015

**Figure 22:** Shopping Iguatemi

**Available in:** <http://empreendebrazil.com.br/2015/wp-content/uploads/2014/10/ig8.jpg>

**Access:** June 22, 2015

**Figure 23:** Shopping Trindade

**Available in:** <http://empreendebrazil.com.br/2015/wp-content/uploads/2014/10/ig8.jpg>

**Access:** June 22, 2015

*The information contained in this document was compiled in May 2015 and is subject to change.*



**Edition**

*Nara Santos*  
*nara@polo.ufsc.br*

*Cíntia Longen*  
*cintia@polo.ufsc.br*

**Design**

*Daniel Silva*  
*daniel.silva@polo.ufsc.br*



Research Laboratories for Emerging  
Technologies in Cooling and Thermophysics

Department of Mechanical Engineering - Federal University of Santa Catarina

88040-900 - Florianópolis - Santa Catarina - Brazil

+55 48 3721-7900 | [polo@polo.ufsc.br](mailto:polo@polo.ufsc.br) | [www.polo.ufsc.br](http://www.polo.ufsc.br)